



Japan NCI™

Now-Casting Index

Released: 12:00 GMT, 14th September, 2017

Next release: 12:00 GMT, 16th October, 2017

www.now-casting.com

Bloomberg: NCIXJP

Japan's economic growth accelerates

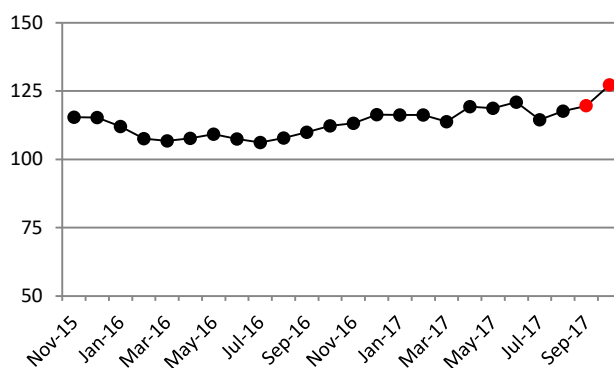
- The Japan NCI™ is at 119.55 for September, up from 117.64 in August, and is forecast to rise further to 127.15 in October, suggesting that the country's economic growth is picking up pace.
- Additionally, to reflect an overall positive balance of surprises in the data flow over the past month, the level of the NCI™ series has been revised upward.

NCI™ release data

reference period	NCI™ Release Dates	
	15/08/2017	14/09/2017
Aug-17	119.15 (A)	117.64 (U)
Sep-17	118.68 (F)	119.55 (A)
Oct-17	--	127.15 (F)

Notes: (A), ACTUAL, denotes the estimate of economic activity for the current month; (F), FORECAST, the forecast for next month; (U) UPDATED, denotes updates reflecting data released since the last NCI publication date. Source: Now-Casting Economics Ltd

Revised NCI™ history



The newsflow: macroeconomic data releases since last month's NCI™

Release Date	Release Name	Reference Period	Model Unit	Release Value*	Model Expectation	Impact of Data Releases	
						Japan NCI™ August	Japan NCI™ September
14/09/2017	Capacity Utilisation: Manufacturing	Jul-17	Index	100.10	101.13	-2.21	-0.32
13/09/2017	MOF Survey Large Manufacturing Companies	Q3'17	Index	9.40	3.41	1.43	2.91
11/09/2017	Tertiary Industry Activity Index	Jul-17	MoM %	0.10	-0.06	0.11	0.03
11/09/2017	Machinery Orders	Jul-17	MoM %	8.00	1.46	0.16	0.05
08/09/2017	Economy Watchers Survey	Aug-17	Index	49.60	50.48	-0.56	-1.05
01/09/2017	Consumer Confidence	Aug-17	Index	43.30	86.94	0.02	0.05
01/09/2017	PMI: Manufacturing	Aug-17	Index	52.25	52.27	-0.02	-0.04
31/08/2017	Construction Orders: Housing Units	Jul-17	MoM %	101.65	25.75	-0.04	-0.01
31/08/2017	Housing Starts	Jul-17	MoM %	-2.96	-0.29	-0.05	-0.01
31/08/2017	Passenger Car Production	Jul-17	MoM %	-7.65	-2.85	-0.91	-0.13
31/08/2017	Industrial Production Excl Construction	Jul-17	MoM %	-0.78	-0.28	-2.19	-0.30
30/08/2017	Small & Medium Enterprises Survey	Aug-17	Index	49.00	49.44	-0.37	-0.49
30/08/2017	Small & Medium Enterprises Survey: Manuf.	Sep-17	Index	51.60	48.91	3.86	7.43
30/08/2017	Small & Medium Enterprises Survey: Services	Sep-17	Index	48.30	49.56	-0.54	-0.24
30/08/2017	Retail Sales	Jul-17	MoM %	0.56	0.06	0.56	0.11
30/08/2017	Vehicle Sales	Jul-17	MoM %	-2.91	-0.51	-1.48	-0.30
29/08/2017	Unemployment	Jul-17	Ten Thousands	190.00	188.93	-0.04	-0.01
17/08/2017	Imports	Jul-17	MoM %	-1.17	1.71	-1.59	-0.32
17/08/2017	Exports	Jul-17	MoM %	2.81	1.38	1.39	0.28
						-2.47	7.64

Note: Released values are expressed in Model Units
Source: Now-Casting Economics Ltd and Official Data Sources

For further information, please contact:

Now-Casting Economics Limited

Jasper McMahan

+44 (0)7802 485904

jasper.mcmahan@now-casting.com

Notes

What is the NCI™? The Now-Casting Index - NCI™ - is an index that measures the state of the business cycle. It is calculated from a broad set of economic indicators.

How to read the NCI™? The NCI™ is normalized to have a mean value of 100 and a standard deviation of 25 calculated over the estimation sample, which starts in 1995. Values above 100 indicate that real activity is growing above the mean.

NCI™ updates The NCI™ is updated in relation to surprises in data releases (*news*) computed as the difference between the release value and model-based now-cast for each input indicator. The weights attached to each *news* are also model-based.

Impact of data releases The impact of each data release on the NCI™ is the product of the economic *news* associated with that release and a model-based weight which reflects the importance of each variable and is a function of its timeliness. 'News' is defined in this context as the difference between the actual value of a release and the model's expectation of that value.

Impact of revisions The difference between the value of the NCI™ released today and the forecast of it made a month ago may be more or less than the total impact of all the releases listed in the table on page 1, because of the impact of any revisions to prior data releases made during this period.

Source of data The Now-Casting Index for Japan is produced by Now-Casting Economics Limited and is based on a model built on monthly and quarterly economic indicators covering production, labour, construction, domestic and international trade, services and surveys. Raw data are supplied by Haver Analytics. Now-Casting Economics releases the Japan NCI™ monthly for the current month together with a forecast for the next month and updates to the previous release. Forecast updates are based on data released since the last NCI™ publication. The model is estimated in real-time at each data release; now-casts of GDP and other macroeconomic series are published live within 30 minutes of the data release.

Now-Casting model The NCI™ is an output of the Now-Casting model, which is designed to capture commonalities among macroeconomic data while filtering out idiosyncratic noise. The model produces estimates of the real economic conditions in different countries in real time, taking into account non-synchronous data sampled at mixed frequency. The NCI™ and its revisions are produced automatically, without judgment or other intervention. The deep parameters of Now-Casting model are estimated at the beginning of every year; the NCI™ is the result of a pure out-of-sample forecast. Normalization is updated at the beginning of every year in concomitance with updates of deep parameters.

Now-Casting Economics Limited is a company delivering high-frequency information on current conditions in the world's major economies. The service covers the US, the Euro Area, China, Japan, Germany, France, Italy, Spain, the UK, Canada and Brazil, and is available by subscription. Weekly now-casts for the Euro Area are available free on the Now-Casting web site (www.now-casting.com).

Legal The intellectual property rights to the Japan NCI™ provided herein are owned by Now-Casting Economics Limited. Any unauthorised use, including but not limited to copying, distributing, transmitting or otherwise of any data appearing in this release is not permitted without Now-Casting Economics' prior consent. Now-Casting Economics shall not have any liability, duty or obligation for or relating to the content or information ("data") contained herein, any errors, inaccuracies, omissions or delays in the data, or for any actions taken in reliance thereon. In no event shall Now-Casting Economics be liable for any special, incidental, or consequential damages, arising out of the use of the data. NCI™ is a registered trademark of Now-Casting Economics Limited. The Now-Casting.com logo is a registered trademark of Now-Casting Economics Limited.